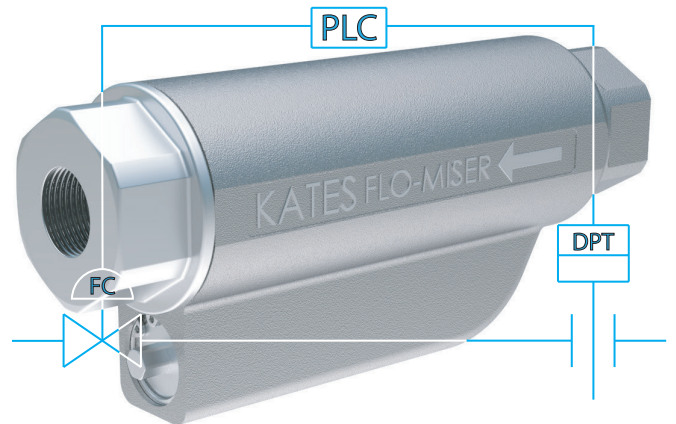


Flo-Miser

OVERVIEW

Model FM Flo-Misers are a versatile, efficient selection for a broad range of applications that require accuracy. These units are robust and cover large flow range and high temperature and pressure ratings. It is completely self-contained, requires no outside source of power, no straight piping runs, and is as simple to install as an ordinary ball valve. The Kates FM Controller has only one moving element that adjusts to pressure changes, and is designed so that there are no complex linkages, delicate bearings, or any failure-prone components. Since the control portion is immersed in fluid, response time due to pressure variations is immediate. Hunting and oscillation is insignificant. Due to its outlet port geometry, it is capable of taking large pressure drops. These products have been applied successfully throughout the industry for a wide variety of liquid applications.

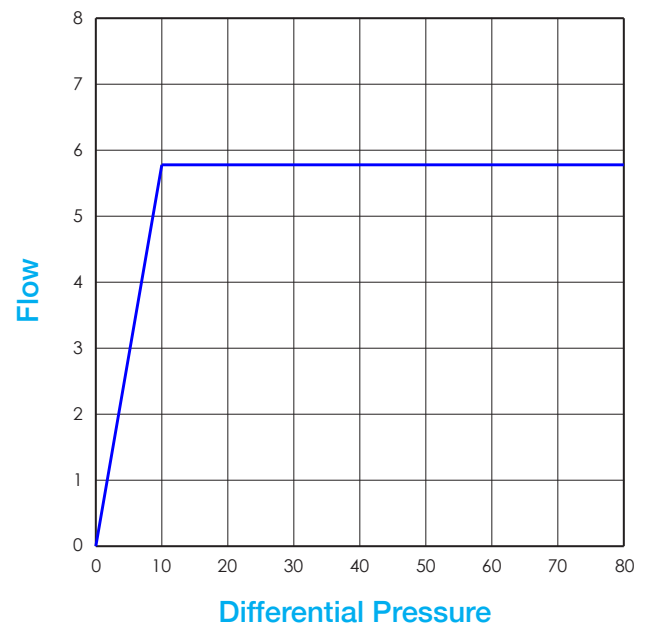


THREE CONTROL ELEMENTS IN ONE UNIT

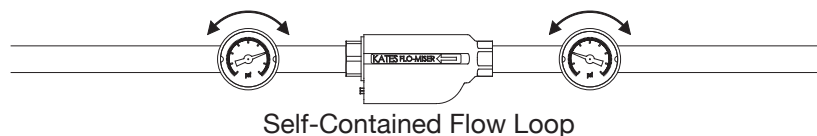


KATES FM SPECIFICATIONS

| | |
|-----------------------------|---------------------|
| Materials of Construction | 316 Stainless Steel |
| Body Seals | PTFE |
| Maximum Working Pressure | 1200 PSI |
| Maximum Working Temperature | 400°F |
| Process Connections | FNPT |
| Accuracy | ± 5% |
| Repeatability | ± 1% |
| Turndown Ratio | 13:1 |
| Response Time | 1-2 Seconds |
| Media | Liquids |



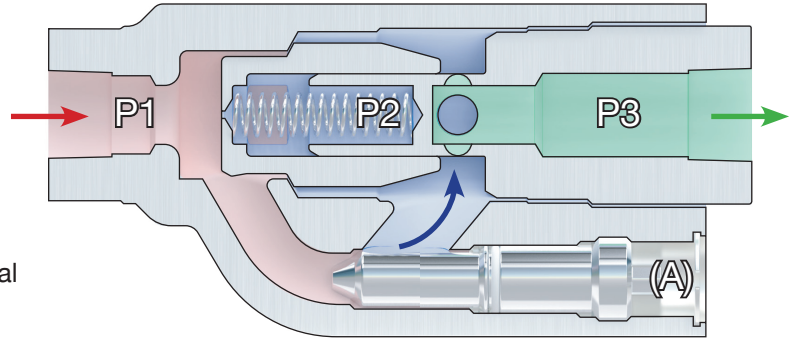
Maintains Flow Regardless of Pressure Changes Upstream or Downstream



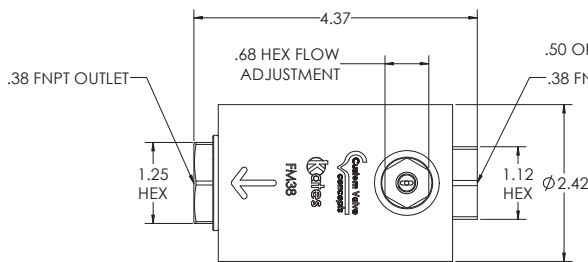
PRINCIPLE OF OPERATION

The Kates Flo-Miser combines an adjustable orifice and an internal regulating valve to automatically control flow rate regardless of upstream or downstream pressure variations.

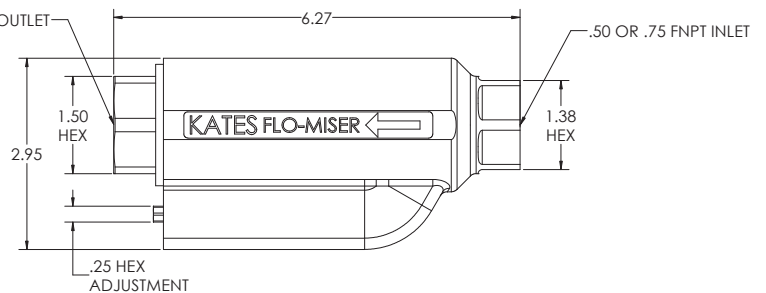
The Kates unit consists of three chambers, an inlet chamber (P1), the center control chamber (P2), and the outlet chamber (P3). The spring maintains a constant differential across the adjustable orifice, which is set by the hex adjustment (A). The flow rate is dictated to the constant differential (P1:P2) and the amount of opening of the orifice. Flow rate out of the unit (P3) must be equal to the set flow across the internal needle valve. Greater or lesser flow out of the unit will be corrected within 1-2 seconds by the internal regulating valve.



| MODEL VARIATIONS | | | |
|--|-----------|----------|----------|
| Part | FM38 | FM50 | FM75 |
| Weight (lbs) | 4 | 4 | 4 |
| Flow Rate (GPM H2O) | 0.3-3 | 1.5-20 | 1.5-20 |
| Line Size (FNPT) | 3/8" | 1/2" | 3/4" |
| Straining Recommendation (Mesh) ((Micron)) | 1600 (14) | 200 (75) | 200 (75) |



FM38



FM50 & FM75

Just Set It & Forget It!

For Additional Information Refer to www.customvalveconcepts.com or Contact Us at:

Custom Valve Concepts
31651 Research Park Drive
Madison Heights, MI 48071

E-MAIL: info@customvalveconcepts.com | PH: 248-597-8999 | FX: 248-597-8998

