

Product Data Sheet
118DS-6c
01/26/04

Series 5453 Indicating Pneumatic Temperature Controllers / Transmitters

General

The 624-II control unit is designed for performance and durability under rigorous operating conditions. The body is of rugged, precision die cast aluminum, and all working parts are of stainless steel. Diaphragms are made of Neoprene; feedback bellows are Ni-Span-C.

Features

Fast response and highly stable control action are key features of the 624-II controller is especially suitable for field-mounting and other types of installations where a control record is not required.

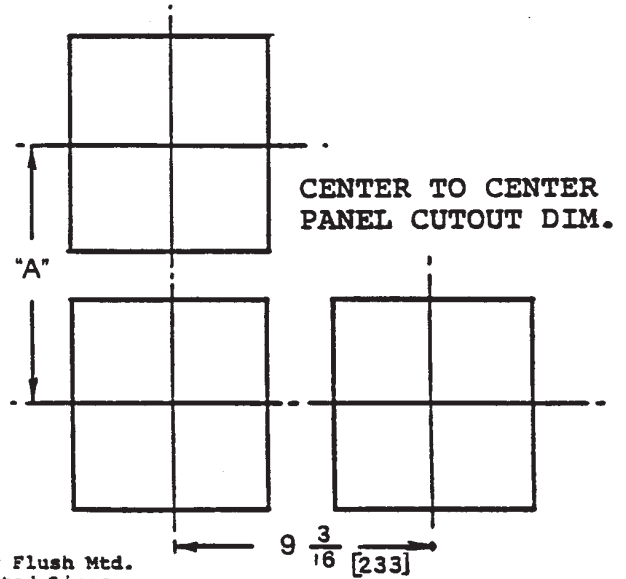
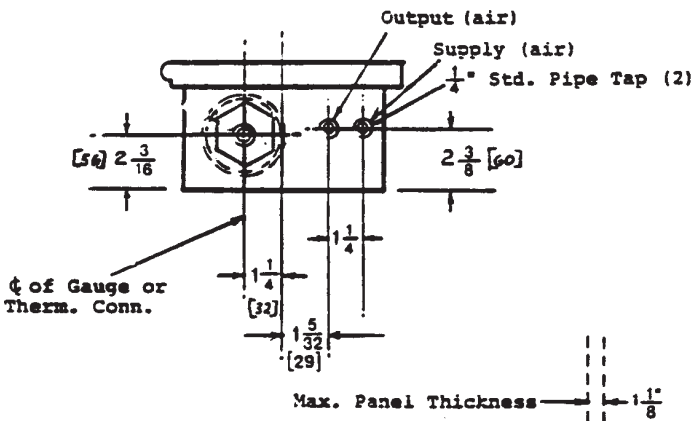
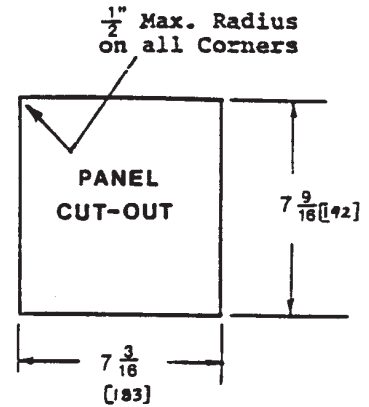
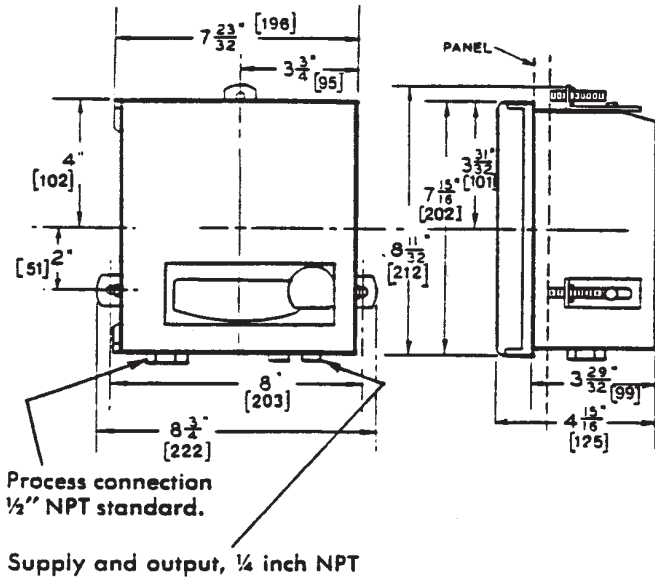
- Gain Control: 50-.25 or 100 2.5; easily adjustable
- Integral (Reset) model: Adjustable from less than .01 to 30 repeats per minute
- Derivative control: Action adjustable from 0 to 30 minutes (derivative by – pass standard)
- Easily reversible control action
- High capacity pilot: Flow is well over 3 scfm at 1 psi drop, both exhaust and delivery
- Push button restriction cleaner, standard
- No plastic tubing

Specifications

- Case: Weatherproof, die-cast aluminum case with gasketed aluminum door and gray epoxy finish standard
- Case dimensions: 7 23/32" wide x 7 15/16" high. 2" horizontal and 5" vertical clearance required between adjacent panel mounted units.
- Panel cutout dimensions: 7 3/16" wide x 7 9/16" high. 2" horizontal and 5" vertical clearance required between adjacent panel mounted units.
- Mounting: Interchangeable flush or surface mounting. Optional brackets and U-clamps available for 2" pipe mounting.
- Scales: Segmental, 3 1/4" calibrated length. Black numerals on white background. Fluorescent pointers for measured variable and setpoint.



- Output: 3-15 psig standard. Other ranges available. Direct or reverse acting.
- Connections: Supply and output, 1/4" NPT female at bottom of case
- Measuring elements: Class 1 and class 3 thermal systems available for ranges between -350° and +1000°F
- Calibrated accuracy: +0.5% of span
- Control modes: Gain (proportional), gain + integral (reset), gain + integral + derivative (3-15 psig output)
- Mode adjustments:
Gain: 100-2.5 or 50-.25
Integral: .01 to 30 repeats per minute
Derivative time: 0 to 30 minutes
- Response level: 0.006% of span.
- Frequency response: Response curve flat to 400 cpm with gain control unit, to 300 cpm with gain + integral unit
- Pilot capacity: 3 scfm, exhaust or delivery, for 1 psi change in output pressure
- Air consumption: 0.05 scfm at balance with 20 psig air supply
- Temperature stability: ±1% of span change in output pressure per 100°F change in ambient temperature



U.S.A.
Bristol Babcock Inc.
 1100 Buckingham St.
 Watertown, CT 06795
 Telephone: (860) 945-2200
 Fax: (860) 945-2213

U.K.
Bristol Babcock Ltd.
 Blackpole Road
 Worcestershire, DY11 7QP., England
 Telephone: 44-(0)-1905-856950
 Fax: 44-(0)-1905-856969

Canada
Bristol Babcock Canada
 234 Attwell Drive
 Toronto, Ontario M9W 5B3
 Telephone: (416) 675-3820
 Fax: (416) 674-5129