

Product Data Sheet  
118DS-16b  
12/09/03

## Series 9110-00A Remote Set Regulator

### Features

- Compact size
- Integrally mounted
- Discrete and analog inputs
- Guard feature\*
- Analog feedback
- Adjustable speed control
- Incremental step change
- Explosion – proof actuator case

*\*In the guard position, the drive mechanism will be active only if the guard input signal is true.*

### General

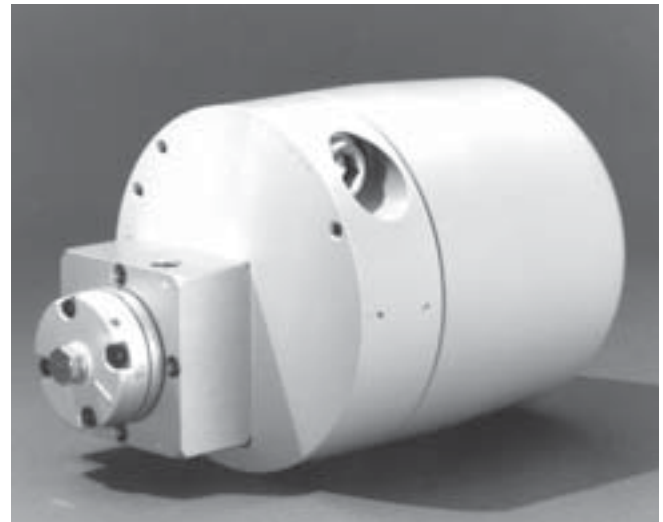
The 9110-RSR is a bi-directional microprocessor based rotary actuator that sets the output of a pneumatic regulator. The output can be adjusted electrically by either discrete (raise/Lower) or analog inputs. These input signals to the “RSR” can be received from remote or local locations either by manual switches or automatic devices.

### Description

Series 9110-00A, Remote Set Regulators are transducer devices that use an electrical input signal to set the level of a pneumatic output signal. Depending on the actual models, the output can be configured for a 1-5 Vdc or 4-20 mA dc signal. For the Raise/Lower models, the input can be configured to accept a continuous or pulse incremental dc signal.

The pneumatic output of a Remote Set Regulator may be specified with a 3-15, 3-27 or 6-30 psi output. All models can operate from pressure supplies up to 100 psi maximum.

The Remote Set Regulator is contained in a weather-proof, explosion-proof enclosure having a detachable threaded cover. Removal of the cover provides access to the field wiring terminals and the programmable option switches.



Regulators are factory-furnished for 12 or 24 Vdc supply operation. These voltage ratings are fixed and cannot be changed in the field.

In-line or pipe mounting are offered as for installations. The former uses a ¼ inch rigid pressure line for support, while the latter includes a special bracket for two-inch pipe mounting.

### Performance Specifications

#### Accuracy

Electrical input to pressure output: ±5% of span  
Pressure output to feedback: ±5% of span

Feedback volts to pressure output: ±5% of span  
Pulse input to pressure output: ±20% of span

#### Sensitivity

.04% of span (Min. input for readable output)

#### Repeatability

±0.5% of span

### Environmental Effect

±1% max. full scale per 50°F (28°C) change

### Supply Voltage Effects

±0.15% max. full scale per 1 volt change

### Hysteresis Effect

(Output to Gage) ½% of span

### Supply Pressure Effect

0.1 Max. PSI change in output for 10 PSI change in supply pressure (within supply limits)

### Gas/Air Consumption

0.007 SCFM at 40 psig supply pressure, at steady state and increasing supply pressures.

## Environmental Specifications

### Primary Location

Suitable for field or housed-in unheated buildings

### Temperature Limits

-20 to 150° F (-29 to 66°C) operating

-40 to 185° F (-40 to 85°C) storage

### Humidity Limits

10 to 95% RH, -20 to 130° F, (-29 to 55° C) operating

10 to 50% RH, 130 to 150°F (55 to 66°C) operating

### Vibration Limits

0.1 g max., 10 – 500 Hz

### Interference

R.F.I. rejection of the actuator depends on the shielding of the input and output since the aluminum housing (with cover in place) greatly attenuates RF field strength.

Effect with wiring enclosed in conduit SAMA STD PMC 33.1, Class 1 and 2, 20 MHz to 500 MHz: <0.5% FS error

### Case Classification

Designed to NEMA type 4 hazardous

### Safety

Designed to meet ANSI Standard C39.5  
Explosion-proof for Class 1, Division 1, Groups B, C and D; Dust-ignition-proof for Class II, Division 1, Groups E, F and G; Suitable for Class III, Division 1; Nonincendive for Class 1, Division 2, Groups A, B, C and D.

## Supply Specifications

### Electrical

Models Requiring 12 volts: 11 to 14 Vdc, 0.35 A max.

Models Requiring 24 Volts: 22 to 28 Vdc, 0.25 A max.

Fusing: One 1 A, 250 V 3 AG normal blow chip mounted on terminal board

Power Failure: In the event that the supply voltage drops below rated value or goes to zero, mechanical memory will retain the last given setting.

### Pneumatic Supply

Models with 3 – 15 PSI range: 20 PSI min., 100 PSI max.

Models with 3 – 27 PSI range: 30 PSI min., 100 PSI max.

Models with 6 – 30 PSI range: 35 PSI min., 100 PSI max.

## Physical Specifications

### General

Actuator Case:

Weatherproof, explosion proof

Cast aluminum housing with gasketed screw-on cover

Light gray epoxy finish

### Overall Dimensions

Actuator Case:  
6" (152.4 mm) dia. By 7-1/8" (181 mm) long  
Model 9110 complete:  
10" (254 mm) long by 6" (152.4 mm) dia.

### Mounting

Model 9110 complete: Line or 2" dia. Pipe mount

### Weight

Approx. 12 lbs.

## REMOTE SET PNEUMATIC REGULATOR 9110-RSR SERIES 9110-00A A B C - D E F

**Model Number: 9110-00A - \_ \_ \_ - \_ \_ 0**  
**9110-00A**

SELECT	DESCRIPTION	CODE
A	<b>ELECTRICAL INPUT</b> X9110BASE	
10	Discrete	1
	Analog	2
B	<b>POWER</b>	
20	12 Vdc	1
	24 Vdc	2
C	<b>PNEUMATIC OUTPUT</b>	
30	3-15 PSI	1
	3-27 PSI	2
	6-30 PSI	3
D	<b>MOUNTING</b> X9110MOUNT	
40	Pipe	1
	Line	2
E	<b>APPROVAL</b>	
50	None	1
	FM-EXP. proof CL I, Div. 1, Groups B, C & D	2
	Dust-ignition proof CL II, Div. 1, Groups E, F & G	
	Suitable for CL III, Div. 1	
	Non-incendive CL I, Div. 2, Groups A, B, C & D	
	NEMA 4	

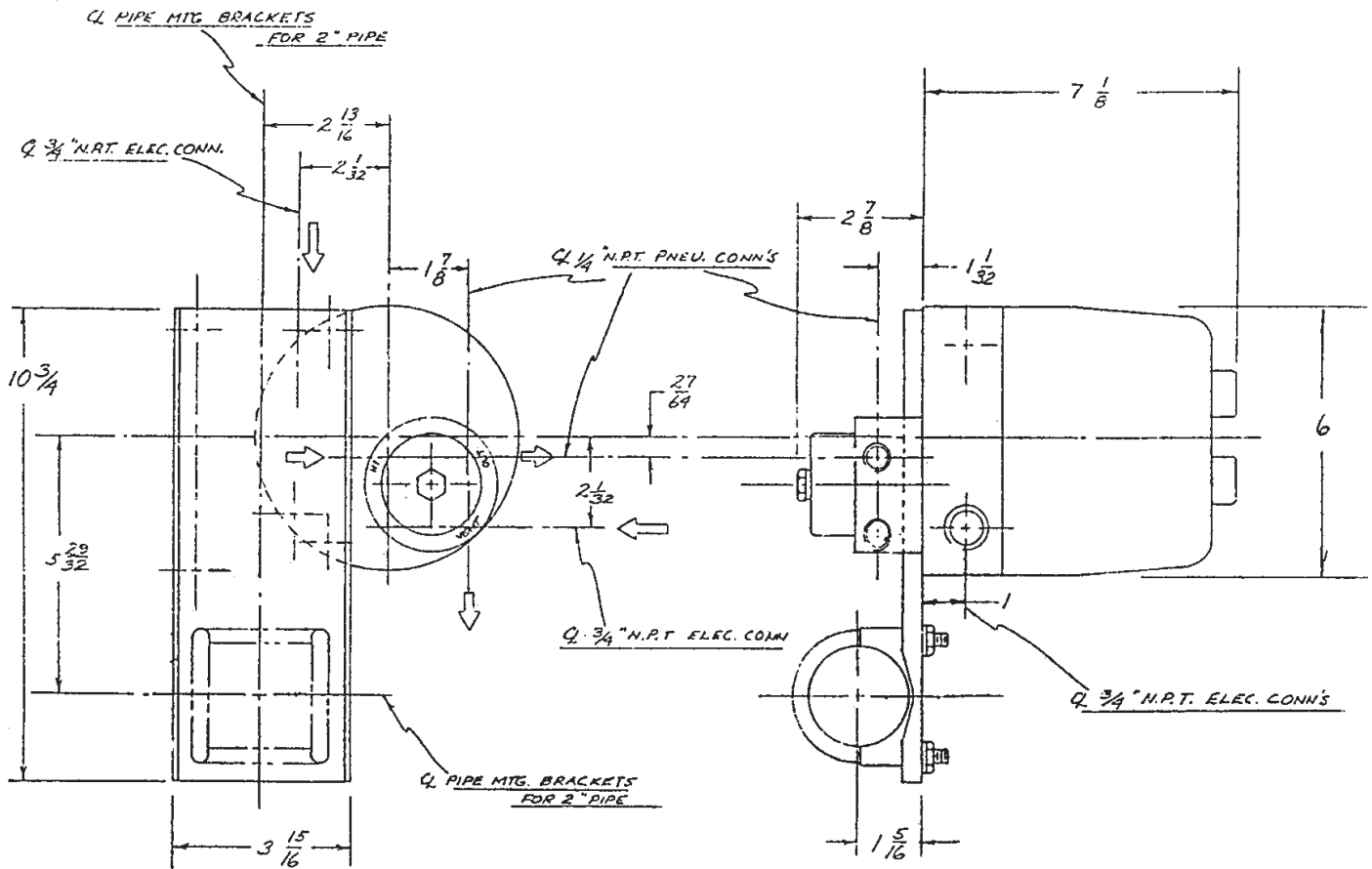
# Bristol Babcock

## Remote Set Regulator

Product Data Sheet

118DS-16b

12/09/03



**U.S.A.**  
**Bristol Babcock Inc.**  
1100 Buckingham St.  
Watertown, CT 06795  
Telephone: (860) 945-2200  
Fax: (860) 945-2213

**U.K.**  
**Bristol Babcock Ltd.**  
Blackpole Road  
Worcestershire, DY11 7QP., England  
Telephone: 44-(0)-1905-856950  
Fax: 44-(0)-1905-856969

**Canada**  
**Bristol Babcock Canada**  
234 Attwell Drive  
Toronto, Ontario M9W 5B3  
Telephone: (416) 675-3820  
Fax: (416) 674-5129