



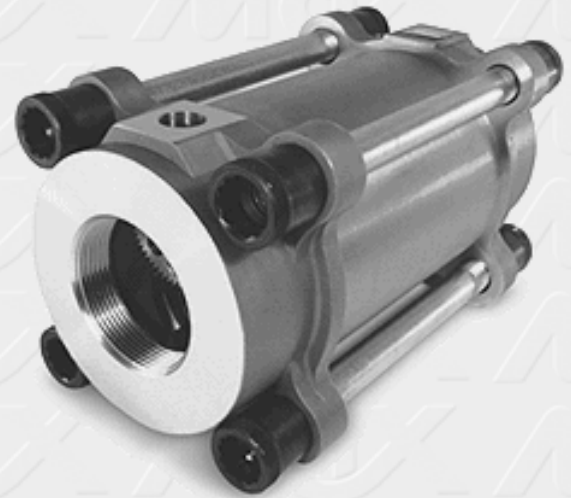
Max Machinery Inc.

Call Max today...
(707) 433-7281

Model 243 Helix Meter

SPECIFICATIONS

- ... **Flow range at (3 cps):** to 1400 liters/min (370 gpm)
 - ... **Maximum Operating Pressure:**
500 psi (35 Bar) - with standard NPT connection
3500 psi (240 Bar) - with customer supplied ANSI RF flanges*
 - ... **Displacement:** 0.152 gal (0.575 liters)
 - ... **Weight:** 100 lbs. (45.36 kg)
 - ... **Recommended Filtration:** 100 mesh (150 micron)
 - ... **Connections:**
3" (76.2 mm) NPT - standard
4" (101.6 mm) customer-supplied ANSI RF flanges - optional*
 - ... **Heat traceable bodies available**
 - ... [Go to Linearity Curve](#)
 - ... [Go to Viscosity / Pressure drop curve](#)
 - ... [Go to Output Signal choices \(Transmitters\)](#)
- *Consult factory for specifications*

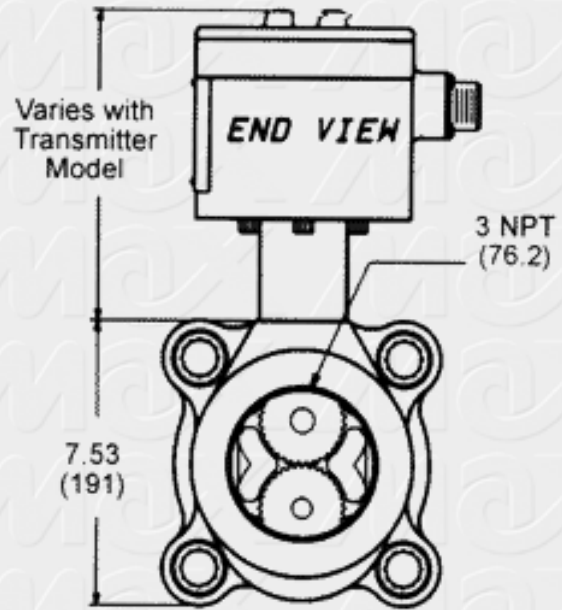
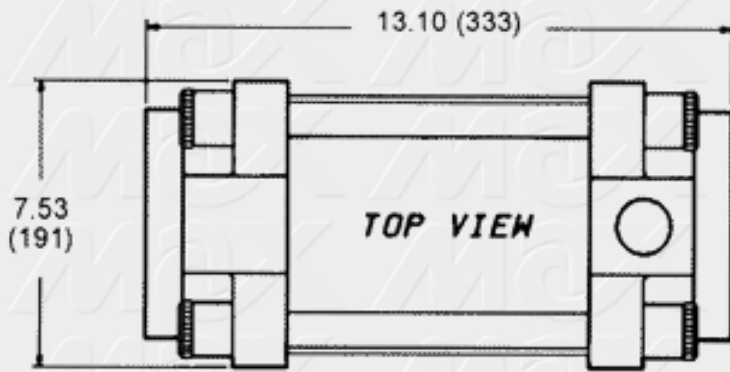


MATERIALS OF CONSTRUCTION

- ... **Body:** Stainless Steel, type 303
- ... **Rotors:** Hard anodized aluminum or stainless steel, type 303
- ... **Bearings:** Stainless steel, type 440C
- ... **Seals:** Viton® "O"- rings - Standard
Teflon®, Neoprene, Nordel®, Buna N Seals - optional

PHYSICAL DIMENSIONS

Dimensions in ()
are millimeters.



Max Machinery Inc., 1420 Healdsburg Ave., Healdsburg, CA 95448 USA

Phone: (707) 433-7281 Fax: (707) 433-0571

All pages and graphics Copyright© 1998 Max Machinery Inc.
Nordel® and Viton® are registered trademarks of DuPont Dow Elastomers.
Teflon® is a registered trademark of DuPont.